



MAKE MORE EFFICIENT USE OF CONFIGFREE™

USING A WIRELESS LAN ACCESS AREA FOR EASY CONNECTION

When you are in a wireless LAN access area, a notification window lets you know that you can connect to the network. This function provides easy, one-step network setup and login.

You may need to have an account with the wireless service provider before you can use this function to connect to a wireless LAN access area. Be sure to configure the wireless LAN connection settings (SSID, WEP and so on) in advance.

Let's see how convenient it is to access a network in a wireless LAN access area


1. SETTINGS

The network environment of the service provider's wireless LAN is registered as a profile in ConfigFree. Note: The SSID and WEP are not automatically set up. Be sure to set these in advance.

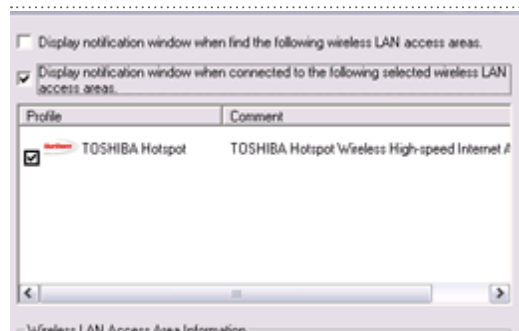
ENABLING THE SETTINGS



Select the Wireless LAN Access Area dialog box.

1. Right-click the  icon in the system tray.
2. Click "Wireless LAN Access Area."

SELECTING A WIRELESS LAN ACCESS AREA



Confirm that the profile of the wireless LAN access area service provider is displayed in the list of profiles.

Select the wireless LAN access area for which you have an account.



The wireless LAN access area profile is added. The selected wireless LAN access area profile is added to the menu profile items.

2. CONNECTING TO A NETWORK WITH THE WIRELESS LAN ACCESS AREA

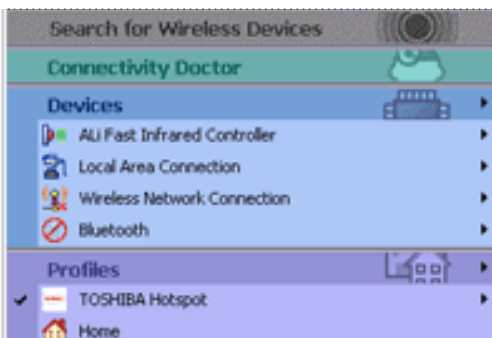


Let's now go to a wireless LAN access area and try connecting to a network.

You leave the office or your home and take your PC to a wireless LAN access area.



When you enter a wireless LAN access area and your PC connects to the designated SSID provided by the service provider of the wireless LAN access area, a notification window appears. Click Switch on the notification window to switch to the profile of the service provider.



The wireless LAN access area profile is added. The selected wireless LAN access area profile is added to the menu profile items.



When you want to disconnect from the wireless LAN access area, click Return on the notification window. This returns the network settings to the original settings used before you connected to the wireless LAN access area network (i.e. before you clicked Switch on the notification window).

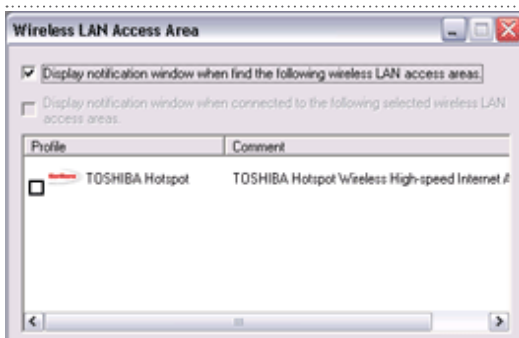
MEMO: If the registered hot spot is approached even when not using an automatic change function, an information window can be displayed and a user can be notified.



1. Select the Wireless LAN Access Area dialog box.

2. Right-click the  icon in the system tray.

Click Wireless LAN Access Area.



The Wireless LAN Access Area screen appears.

1. Check “Display notification window when connected to the following wireless LAN access area.”

2. Click OK.



Discovery of Wireless LAN Access Area displays an information window.



Clicking on “Additional Information” displays detailed information about the Wireless LAN Access Area.